

Adding Value through Design and Partnerships

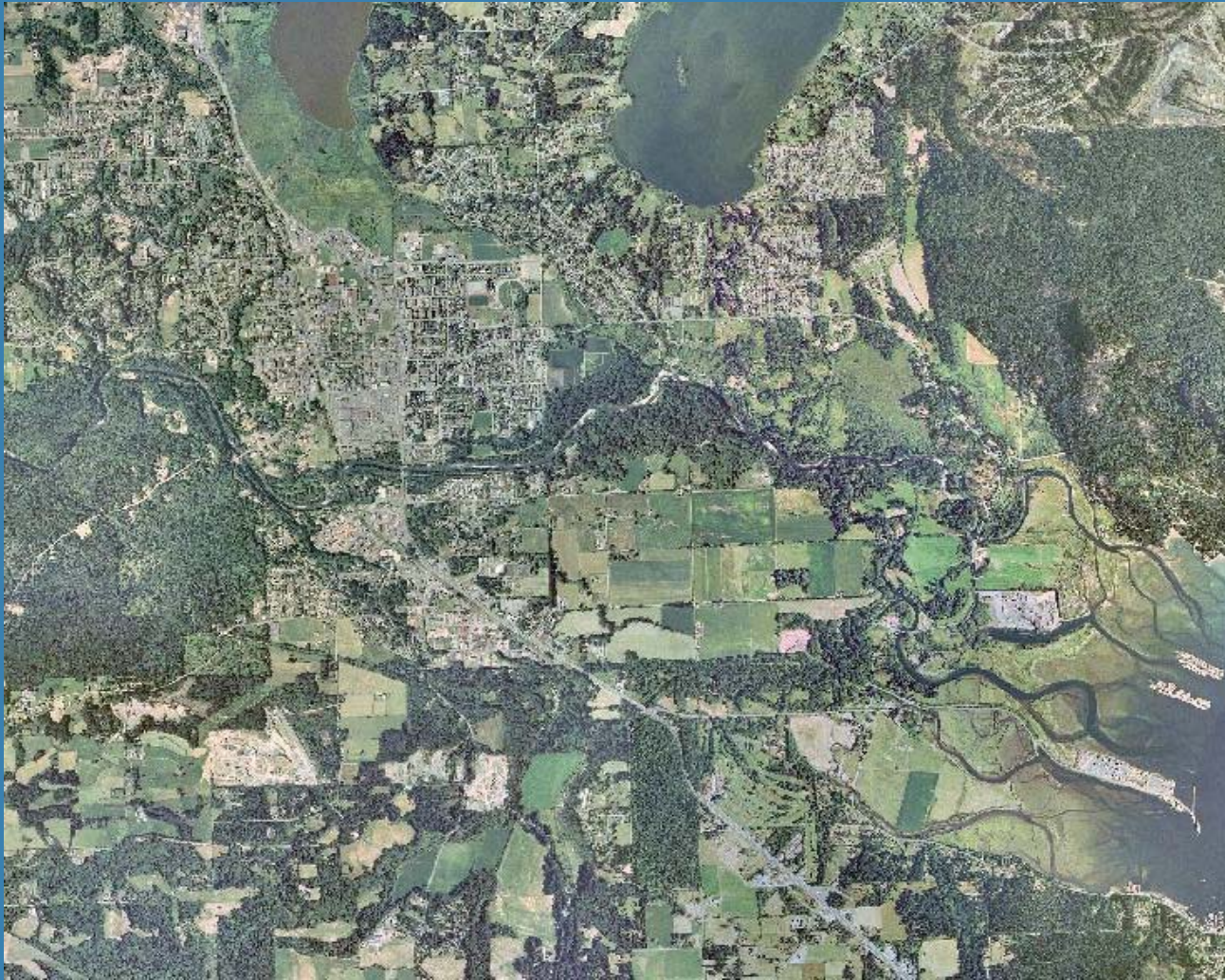
- Watershed Based
- Ecosystem based
- People friendly



Cowichan



**Sh-hwuykwsele
(Busy Place Creek)**

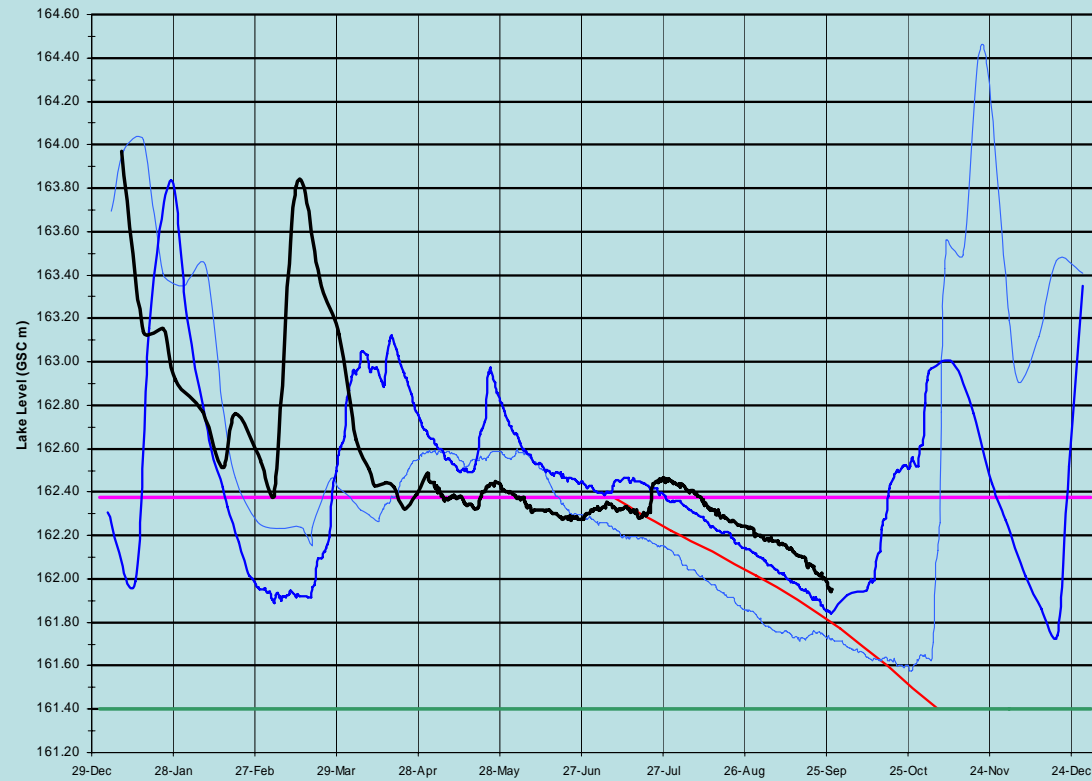


cowichan

Typical Rainfall Scenario

Cowichan Lake Level - 2007
Measured manually by weir operators

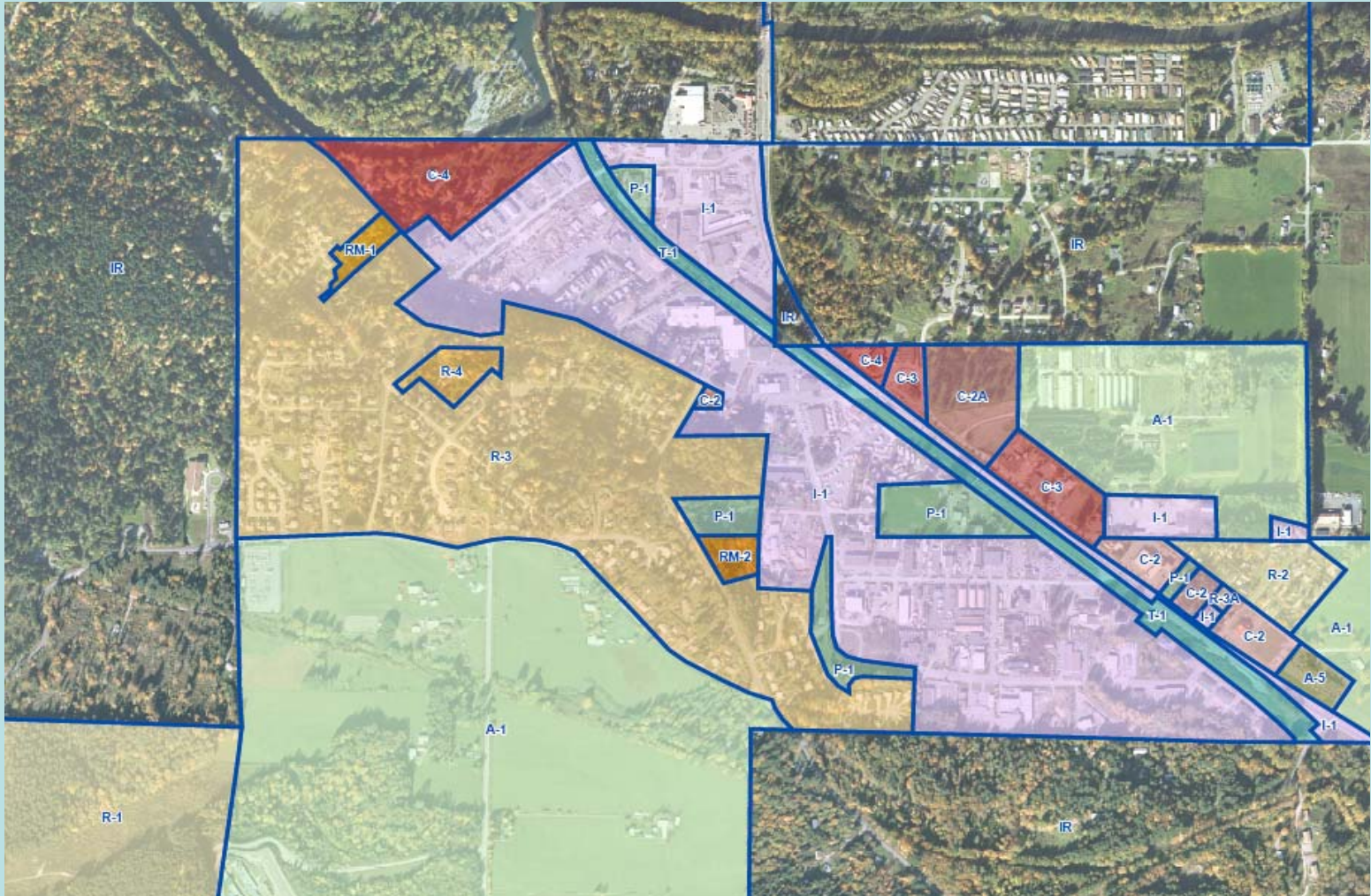
Weir Control Period:



Lidar



Land Use





cowichan



cowichan





WHO WILL BE INVOLVED?

- Farming Community.
- Local interest groups.
- First Nations.
- Local Governments.
- Provincial and Federal Governments.
- Business

People

- Involving people as assets in design and support
- People
- Residents
- School Children
- Cowichan Tribes
- Fisheries Stewardship Groups
- Naturalists
- Ministry of Environment
- Ministry of transportation
- Department of Fisheries and Oceans
- Local government Planning, Engineering, Building, Parks



cowichan

Perspectives

- **Educational**
- **Residents**
- **Businesses**
- **Regulatory Responsibilities MOE / DFO**
- **Project Based**
- **No over arching mechanism to develop a vision and plan**

green infrastructure





The proposal

Move to an integrated watershed management approach to regulating and encouraging water centric development

Adapt the RAR to site specific needs and a more “system” based process

Allowing modification of setbacks and development of structures.

Performance standards - no net increase in rainwater runoff

DCC charge or tax that provides support to the management of the developed “infrastructure” which provides services to a “service area” to offset the cost of maintenance

Recognition of challenges within the industrial area to manage valuable ground and surface water



Opportunities

cowichan



NEXT STEPS

Create partnerships / new vision