



---

**Green Infrastructure Partnership**

# The Topsoil Law and Policy and Technical Primer Set

Bowker Creek Forum  
February 23, 2010

Susan Rutherford, Staff Counsel  
West Coast Environmental Law



---

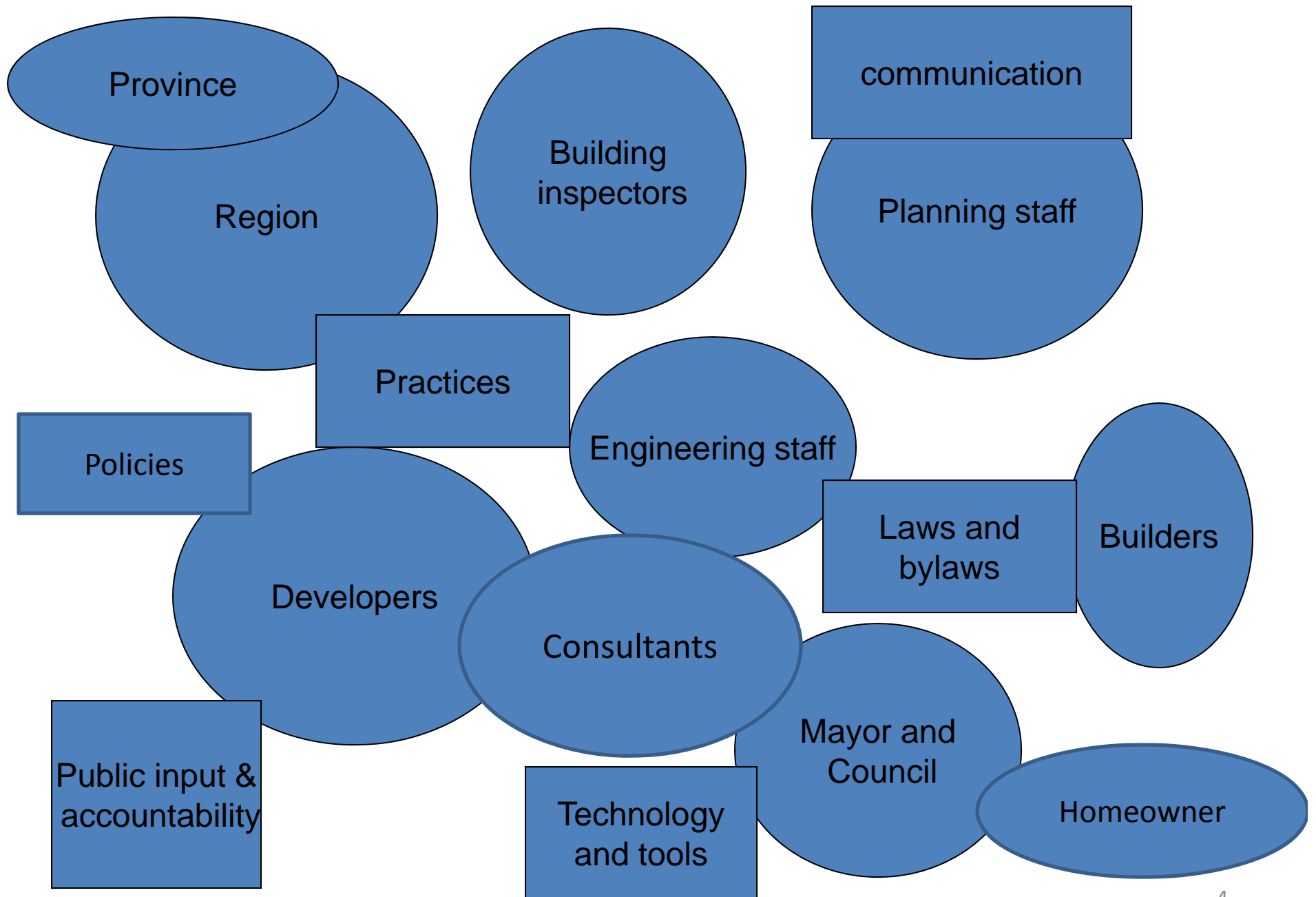
## Green Infrastructure Partnership

- Collaborating since 2004
- Building strong relationships
- Advancing strategies and tools

# Genesis of Topsoil Primer Set

- Debrief from Surrey Water Balance Model Forum, March 2009
- A succinct statement of the essential elements
- Start with a dead simple example – topsoil layer
- Emphasize shared responsibility matrix - i.e., an approach to impose order out of....





# Objective for Primers

- Develop a useful one-pager (well...10 pager!?)
- Distil lessons learned, strategies, tools
- Provide a “leg up” to those embarking on a similar goal – guidance on what they need to think about to maximize chances of success
- Bolster understanding of the complexities and interactions among players, legal, communication and technical tools



---

**Green Infrastructure Partnership**

# **Topsoil: *Just How Do You Obtain a* Performing Topsoil Layer, to Advance Rainwater Management & Water Conservation Goals?**

**A *Law and Policy Primer* for Municipal Staff and Designers**

# Law and Policy Primer:

## What does it cover?

- Getting focused - the “why” and the context
- Internal collaborations
- Regulation ideas
- External collaborations – education and communication

Good communication is a theme running through all of it!

# The why and the context

- Understand the goal and the benefits, why people will be interested
- Understand the context – how this objective fits into the broader policy context





# Internal collaborations

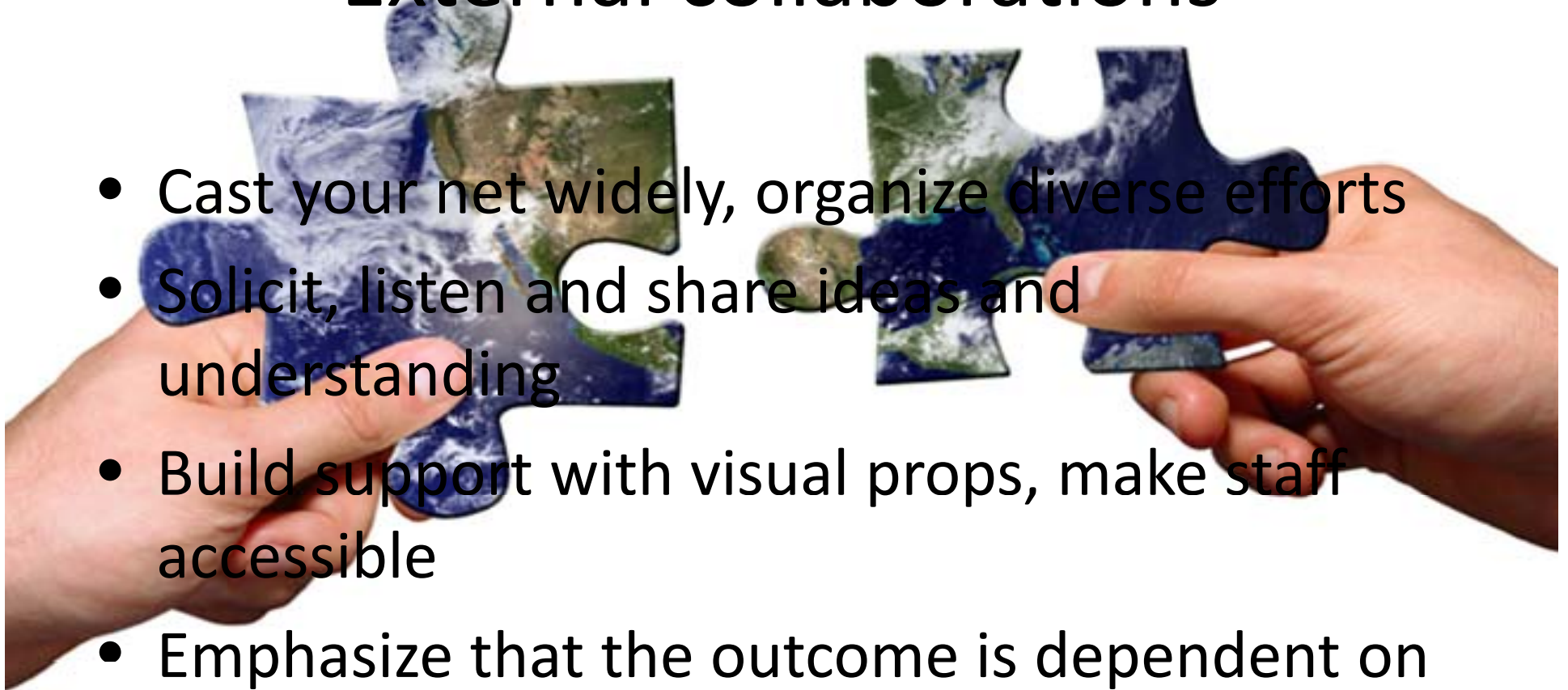
- Need for inter-departmental support
- Leadership
- Consult early, consult often, consult on the details!
- Emphasize benefits – the costs and the savings
- Be aware of political winds

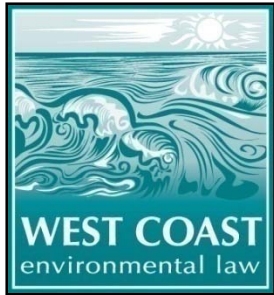
# Regulations

- Education and outreach sets the stage for compliance
- Primer discusses specific legal tools; consider:
  - **Key entry points** for advancing objective
  - **Means** for securing results, enforcement
  - **Be flexible** identifying opportunities
- Performance standard + minimum prescriptive
- Is there a revenue opportunity to recover costs?

# External collaborations

- Cast your net widely, organize diverse efforts
- Solicit, listen and share ideas and understanding
- Build support with visual props, make staff accessible
- Emphasize that the outcome is dependent on all of the components coming together





West Coast Environmental Law thanks the following foundations which provided key financial support to this project:



THE REAL ESTATE  
FOUNDATION  
OF BRITISH COLUMBIA

The Bullitt Foundation

---

1212 Minor Avenue, Seattle, Washington 98101-2825 • (206) 343-0807 FAX (206) 343-0822



Green Infrastructure Partnership

## Discussion

- We intentionally avoided modeling issues. Thoughts?
- What would you identify as the “essential elements” for implementing a GI project, and why? This is a living set of documents....
- Do you think this type of Primer set will be useful to you? What other topics would be helpful?
- Other ideas or questions?