

It's easy being Green!

(sorry, Kermit)



Ministry of
Environment

“.... green's the colour of Spring.
And green can be cool and friendly-like.
And green can be big like an ocean, or important
like a mountain, or tall like a tree”

Overview

- What do we mean by “develop green”?
- What’s at risk on Vancouver Island?
- What are the Ministry guidelines for ‘developing with care’?
- Some examples

What do we mean by Green?

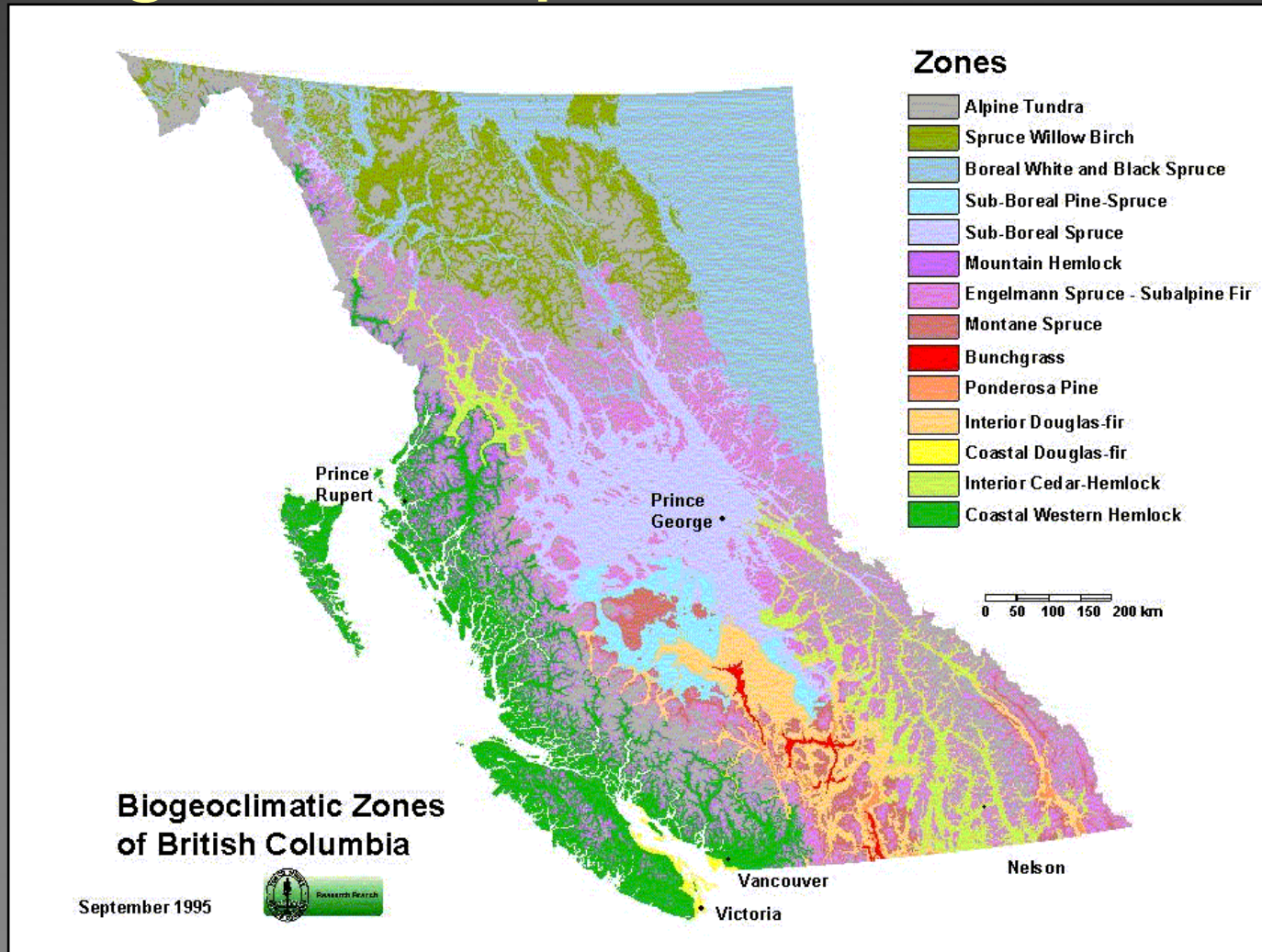


What's the problem?

Habitat loss and destruction

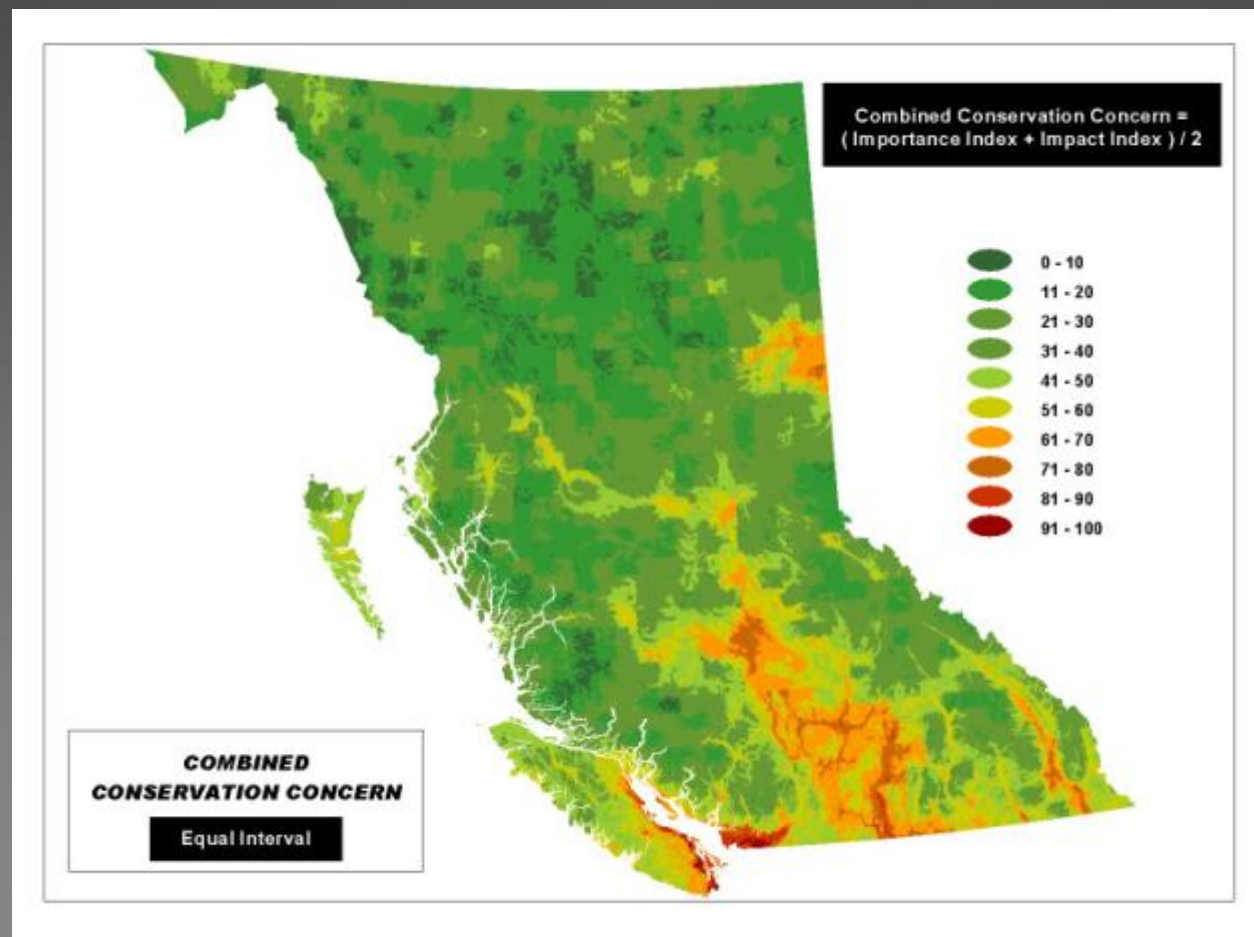


Development pressure overlaps ecological hotspots



What's the problem?

Species at risk



S
C
Suitable for Cedar



FOREST AND GRASS
BUTTERFLY
CEDAR
OAK

Small Change
Small Change

FUTURE
Small Change
Most Likely
Big Change

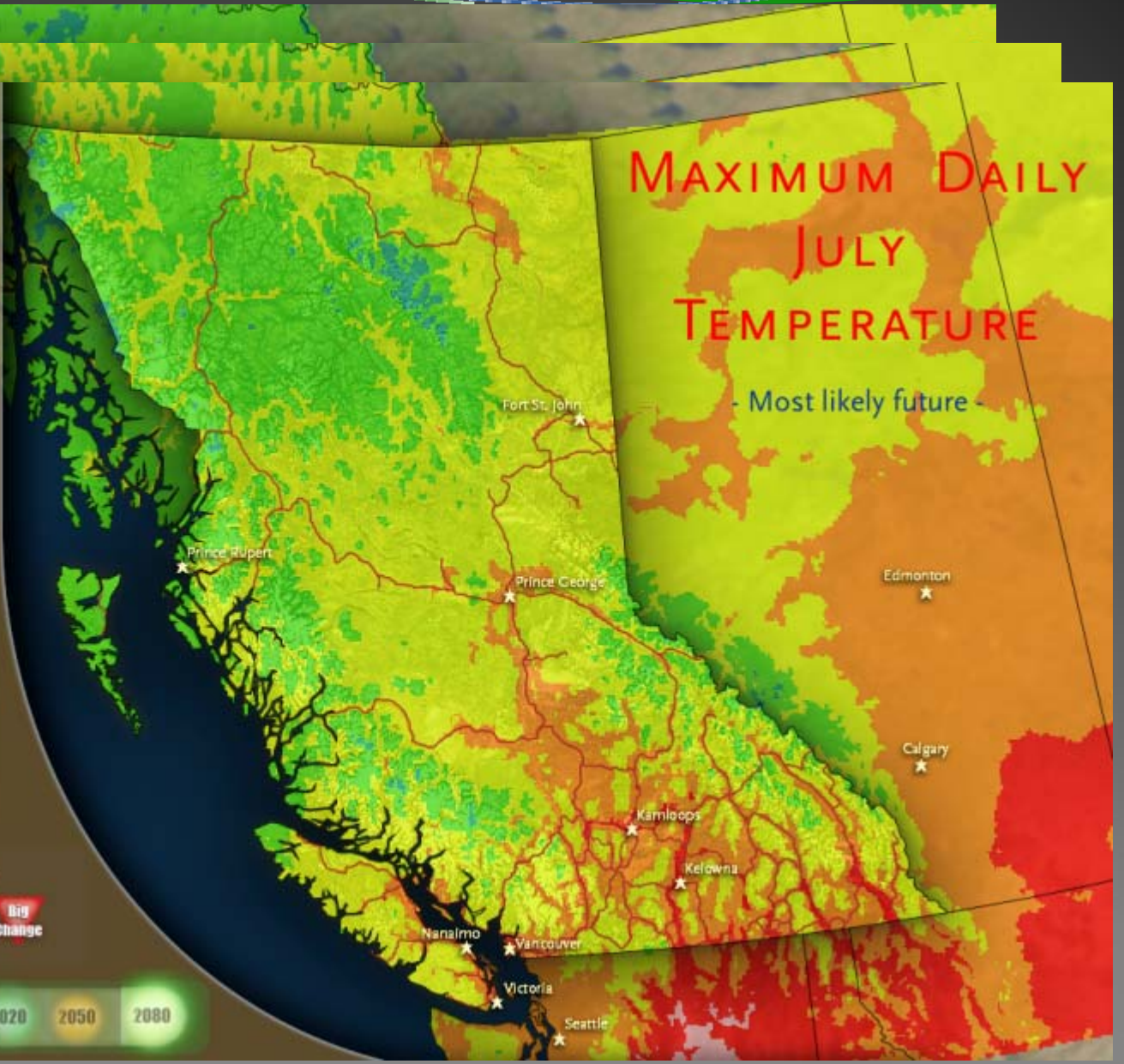
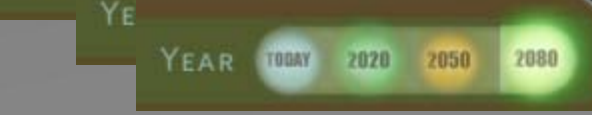
YEAR TODAY 2020 2050 2080

WESTERN REDCEDAR CLIMATE

Areas that will support the growth of Western Redcedar.

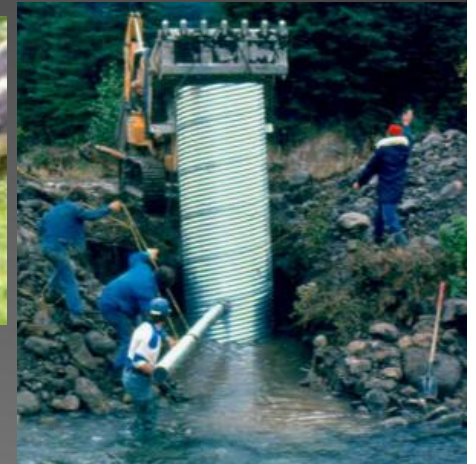
- Most likely future -





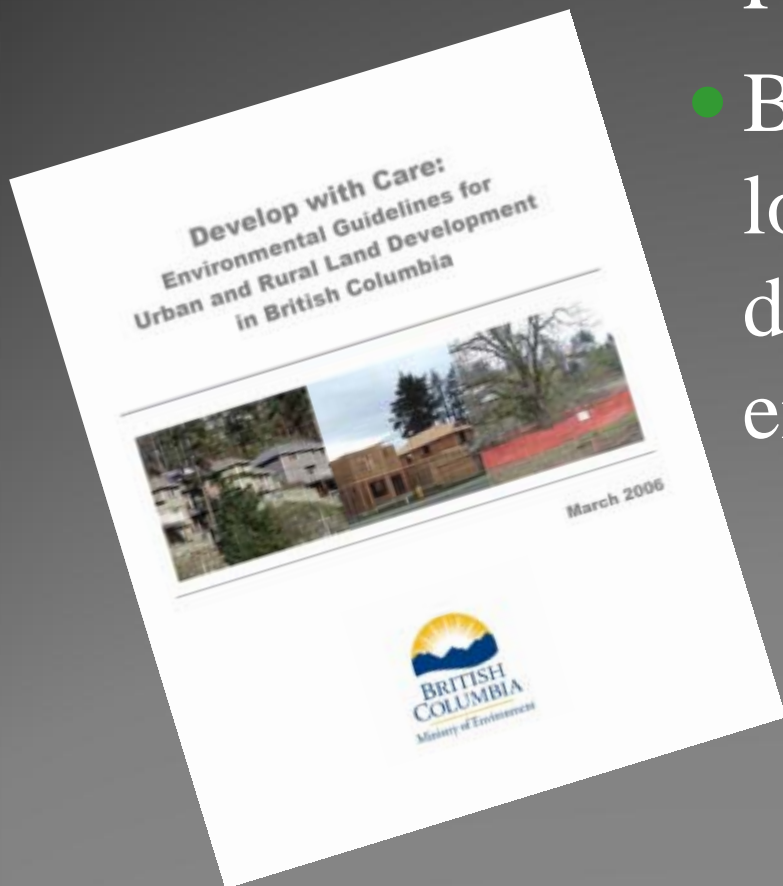
Guidelines and best management practices

- Develop with Care
- Amphibians & Reptiles
- Raptors
- Wetlands (under development)
- Urban Bio-Inventory (under development)
- Stormwater Planning – A Guidebook for BC
- Standards and Practices for Instream Works



Develop with Care

- For planners and developers
- Builds on leadership from local governments and developers to achieve shared environmental goals



Develop with Care...



- How to protect **environmentally valuable resources**
- Objectives, legal requirements and guidelines
- Benefits of developing green
- Case studies and tools
- Links to further information

WHAT NEEDS TO BE ACHIEVED

- Protected ecosystems & species
- Clean and safe water, land & air
- Healthy communities
- Human/landscape connections maintained

1. Develop in the right place
2. Design for protection
3. Build it green
4. Build with care

HOW TO
GET
THERE

Putting it into practice



Public Notice
Owners & Contractors
Rainy Season is Coming

DRAINAGE FROM YOUR SITE
DISCHARGES INTO
FISH BEARING WATER!
GET THE SILT OUT

TO HELP PREVENT
Siltation From Your Site

- 1 - PROVIDE A GRAVEL ACCESS DRIVEWAY TO THE BUILDING
- 2 - PARK ON THE GRAVEL ACCESS
- 3 - CLEAN UP ANY MUD AND SOIL ON THE ROADWAY
- 4 - COVER THE EXCAVATED SOIL PILES
- 5 - PROVIDE GRAVEL FILTER STRIPS BETWEEN THE ROAD AND ANY CONCENTRATED STREAM OF WATER
- 6 - STAY OFF DISTURBED AREAS WITH YOUR VEHICLES
- 7 - GRASS YOUR SITE

PREPARED BY HIGHLAND ENGINEERING AND SURVEYING 287-28156

You make a mess and the Department of Fisheries & Oceans and the City Bylaw Enforcement Officer may be looking for you



#1: Develop in the right place

- Smart Growth – clustering, brownfield/greyfield
- Avoid hazards (flooding, erosion, wildfire interface, wildlife conflicts)



The right place...

- Lantzville Foothills



... not the wrong place



#2: Design for ecosystem & species protection

Develop with Care says

- Design for conservation first
- Retain and enhance ecosystem features and function
- Buffers



Buffer and Conservation Covenants

‘no-development’ buffers around the creeks

Covenant area



Homeowner Stewardship

Homeowner's manual provides information on:

- The creek and salmonids
- Onsite stormwater management and water pollution
- The covenant and TLC
- Tips on naturescaping and invasive species management



#3: Build it Green

Develop with Care says

- Create green buildings and facilities
- Maintain natural hydrology
- Put water back in the ground
- Landscaping
 - 20 cm of topsoil
 - No invasives



Vancouver Island Technology Park

- LEED Gold Building
 - Low water and energy use
 - 99% reuse/recycling of building materials
- Landscaping
 - Native plants – less watering
 - Create habitats, increase biodiversity
 - No pesticides



Rainwater Management

- Wetlands constructed to manage runoff
- Grass pave/gravel pave parking lot



#4: Build with Care



Develop with Care says

- Protect ecosystem features and functions during construction
- Monitor environmental impacts
- Control erosion and sediment
- Schedule construction to avoid sensitive time periods

Site Monitoring



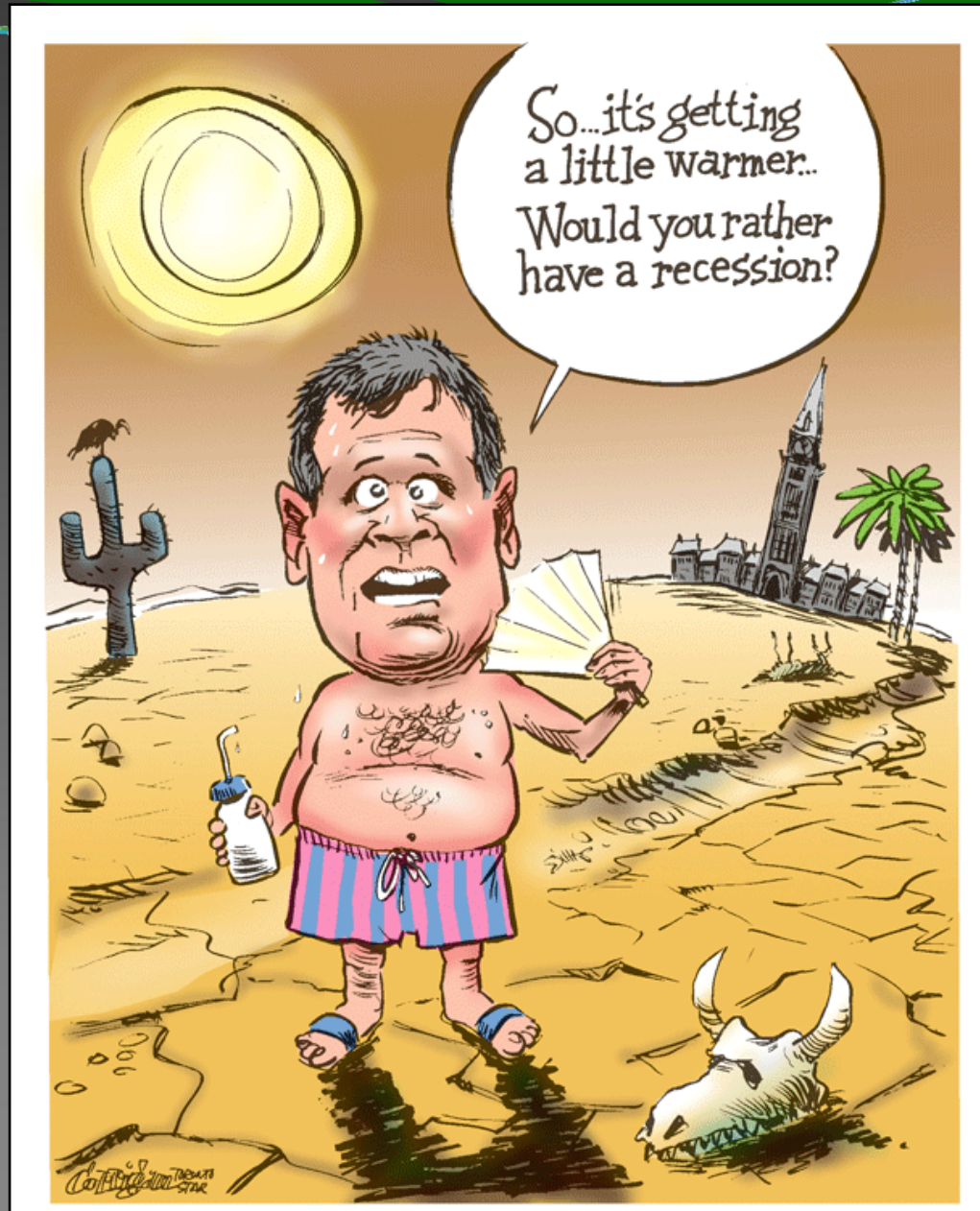
- Site monitoring during construction
- Education of site workers
- Photopoint monitoring of site and pond for 3 years

In summary...

- Develop in the right place
- Design for protection
- Build it green
- Build with care



And in closing...



For more information contact:

Marlene Caskey

(250) 751-3220

Marlene.Caskey@gov.bc.ca

Maggie Henigman

(250) 751-3214

Margaret.Henigman@gov.bc.ca