

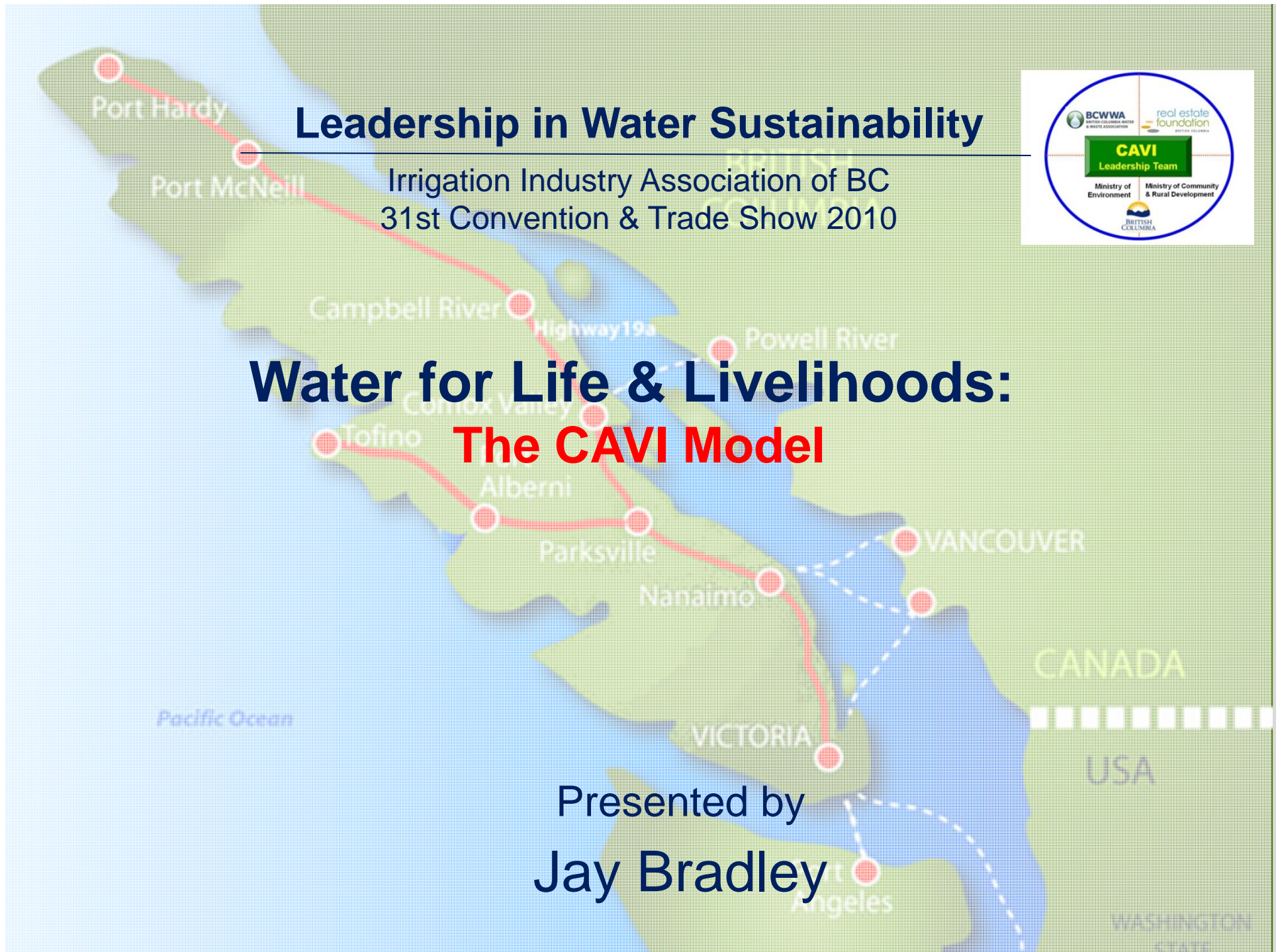
Leadership in Water Sustainability

Irrigation Industry Association of BC
31st Convention & Trade Show 2010



Water for Life & Livelihoods: The CAVI Model

Presented by
Jay Bradley



A map of Vancouver Island, British Columbia, Canada, is shown in the background. A red line with circular markers connects several locations: Port Hardy, Campbell River, Tofino, Port Alberni, Port Angeles, and Victoria. The map also shows the Pacific Ocean to the west, the US-Canada border to the east, and parts of Washington State and the USA. The text 'Green Value' is overlaid in green.

The New Business As Usual:

Visualize What We Want Vancouver Island to Look Like in 50 years

Green Value

CAVI promotes water-centric planning and a *Design with Nature* way-of-thinking and acting to create livable communities in balance with ecology

**CAVI – Convening for Action on Vancouver Island
Leadership in Water Sustainability**



**Mission Possible:
A 50-Year Vision for Vancouver Island**



Vision and Task

*“A vision without a task is but a dream.
A task without a vision is but drudgery.
A vision with a task is the hope of the world.”*

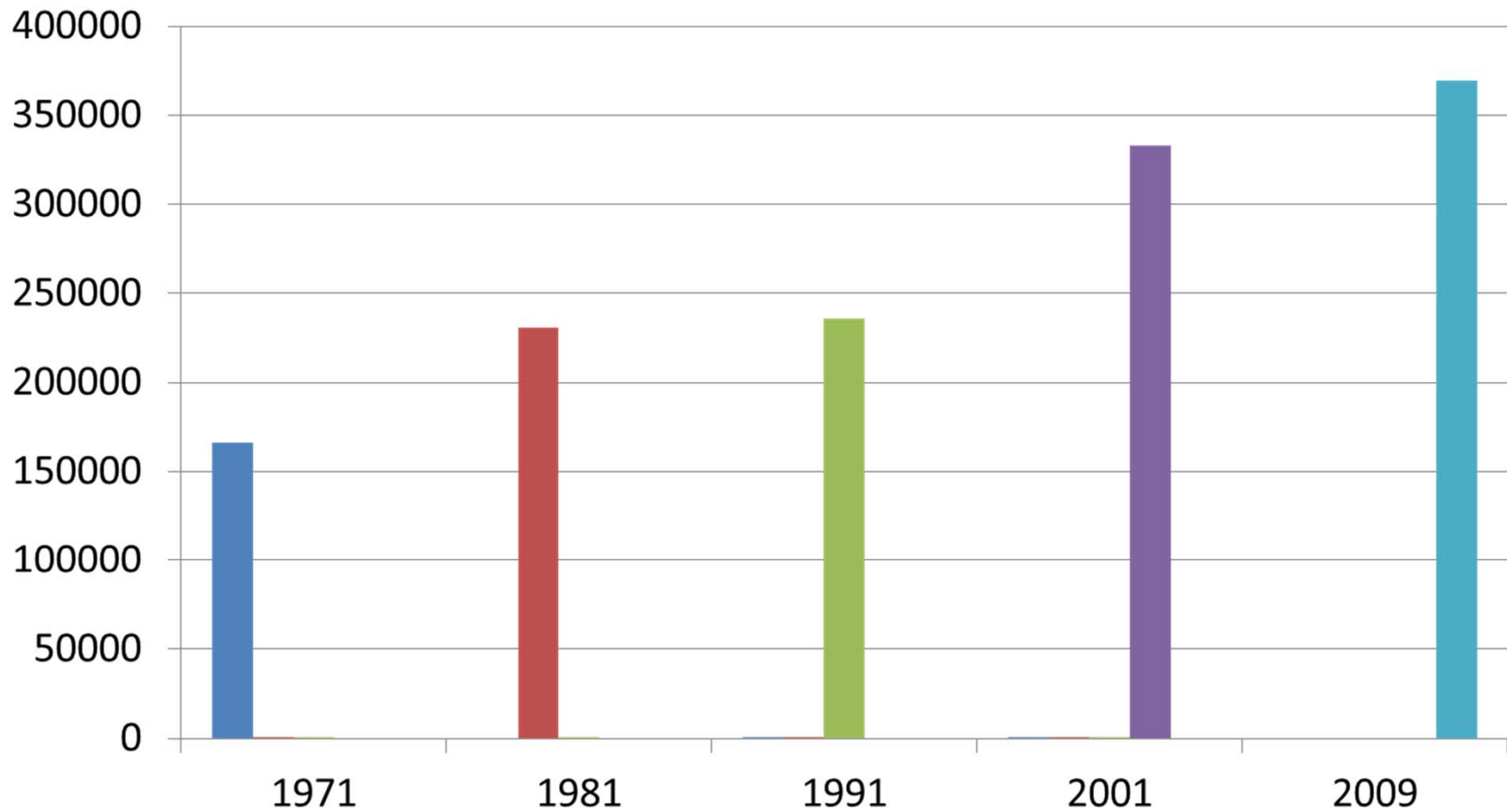
Church inscription
Suffolk, England 1786

Why a Vancouver Island Vision?

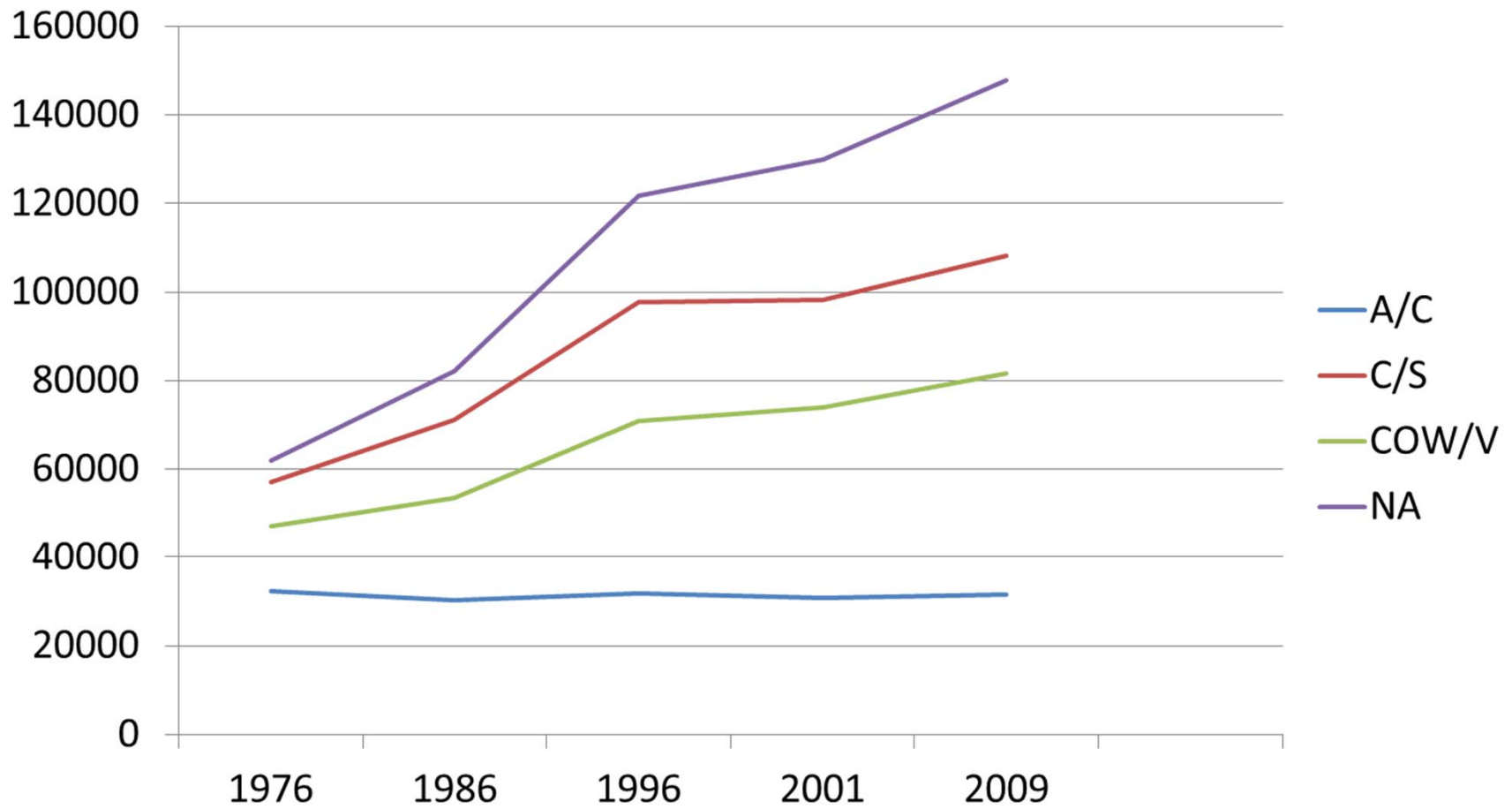
- Population Increase
- Climate Change
- Drought / Flood
- Urban Sprawl
- Traffic Congestion (e.g. 'Colwood Crawl')
- Habitat & Greenspace Protection
- Food Security



POPULATION CHANGE IN MID-ISLAND REGION



POPULATION CHANGE BY REGIONAL DISTRICT



Migration - Vancouver Island Coast Development Region

	International	Inter-provincial	Intra-provincial	Total net
2000 – 01	598	813	1418	2829
2002 – 03	790	2592	2176	5558
2004 – 05	1735	4472	2301	8508
2006 – 07	11796	4260	1994	8059
2008 - 09	3263	3439	2601	9303

*“One market,
from Cobble Hill
to Campbell River.”*



Convening for Action to Do Business Differently:

*Visualize What We Want Our Regions of
British Columbia To Look Like in 50 years*

Settlement Change *in balance with* **Ecology**



- Ecology can exist without human habitation
- Human habitation cannot exist without ecology!

The CAVI network is extensive and expanding.
It is about a new form of governance;
and planning “outside the pipe”.



Collaboration, a 'Design with Nature' approach, and re-use of resources are keys to CAVI


- Develop compact, complete communities
- Increase transportation options
- Re-use and recycle water, energy and nutrients from liquid wastes
- Protect and restore urban 'green' space
- Strive for a lighter 'hydrologic footprint'
- Achieve higher levels of stream, wetland and marine environment protection



An aerial photograph of a city, likely Vancouver, showing a large industrial or commercial complex in the center. The complex consists of several large, interconnected buildings with flat roofs and some parking lots. The surrounding area is a mix of residential housing, trees, and other commercial buildings. The text is overlaid on the top half of the image.

The Bowker Creek Blueprint is all about a new form of governance:

- First the Vision
- Then Community Involvement
- Then Support from Municipal Decision Makers
- Then Apply 'Design with Nature' as a Consistent Future Approach to Development

An aerial photograph of a coastal town, likely Victoria, British Columbia. The town is densely packed with green trees and buildings, situated along a peninsula. A large body of water, likely the Strait of Juan de Fuca, is visible in the background. A golf course is visible in the foreground, and a large bridge spans the water in the distance.

**The Blueprint can create a legacy
because the players ...**

- **Have the temerity to propose a 50-Year Vision**
- **Are willing to act upon this vision**
- **Have drawn three municipalities together to rehabilitate Bowker Creek**



New Vision - New Priorities

"We cannot manage the scale, complexity and dynamics of the 21st Century with the tools of the 20th.

We are at a turning point in world history where new ideas, new values, new strategies and new institutional arrangements are needed.

We must find the vision, the leadership, and the creativity to collaborate in developing constructive solutions."

Martin Lees
Secretary General
The Club of Rome

‘Convening for Action’ experience shows that success will follow when communities.....

- 1. Choose to be enabled.**
- 2. Establish high expectations.**
- 3. Embrace a shared vision.**
- 4. Collaborate as a ‘regional team’.**
- 5. Align and integrate efforts.**
- 6. Celebrate innovation.**
- 7. Connect with community advocates.**
- 8. Develop local government talent.**
- 9. Promote shared responsibility!**
- 10. Change the land ethic for the better.**



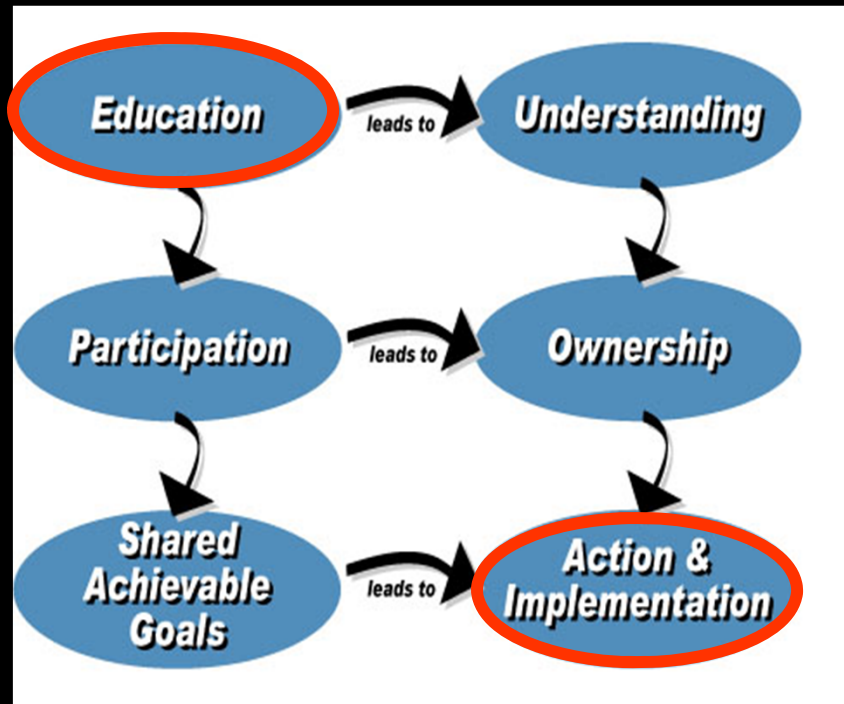
The background is a map of Vancouver Island and the surrounding coastal areas of British Columbia, Canada, and Washington State, USA. A red line with circular markers at various points traces a route along the coast and through the interior. The route starts at Port Hardy, goes south through Port Mudge, Campbell River, Comox Valley, Tofino, Port Alberni, Nanaimo, and Victoria, then continues south through Port Angeles. Dashed white lines connect some of these points, indicating alternative or potential routes. The map also shows the Pacific Ocean to the west, the border between Canada and the USA to the east, and the location of the Strait of Juan de Fuca. The text 'Mission Possible: A 50-Year Vision for Vancouver Island' is overlaid on the map, and 'Why Not?' is written in large letters across the center.

Mission Possible:

A 50-Year Vision for Vancouver Island

Why Not?

This is what needs to happen to achieve integration that leads to action



Source:
Stormwater Planning: A Guidebook for British Columbia, 2002

Critical Success Factors:

- *Commitment* to take action & deliver
- *Champions* to provide energy & drive
- *Accountability* to deliver at all levels
- *Resources* to get the job done

Inform, Educate & Inspire