

From Stormwater Management to RAINwater Management: Implementing a Course Correction in Metro Vancouver



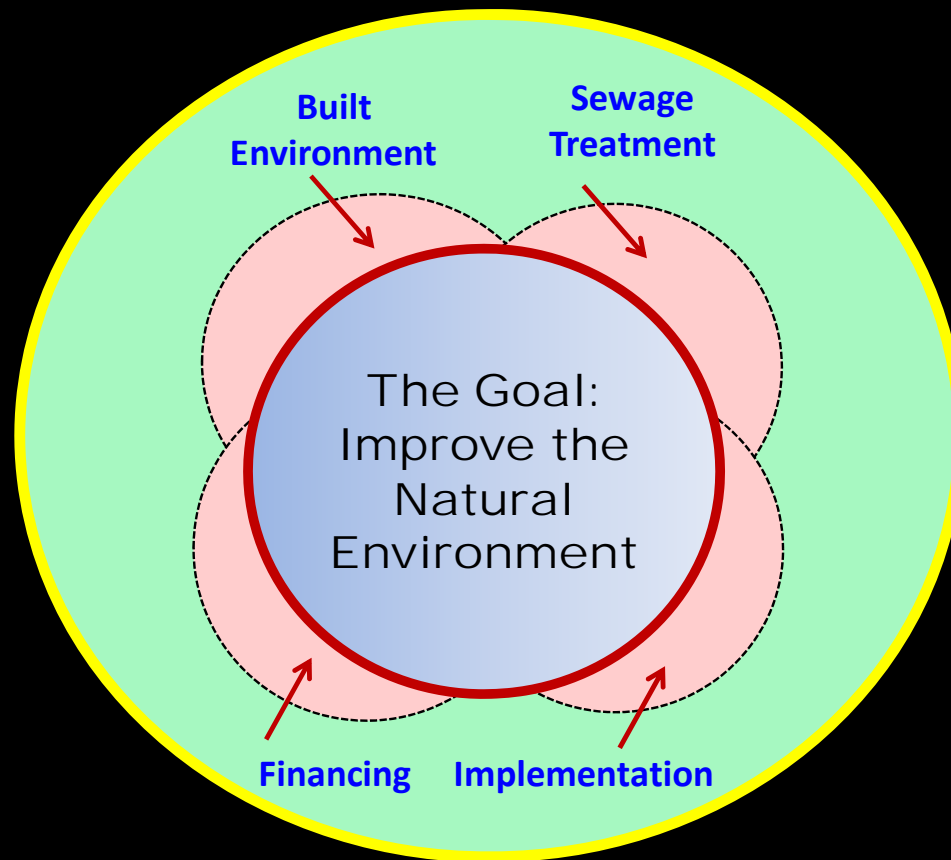
Kim A Stephens, Chair
Metro Vancouver LWMP Reference Panel

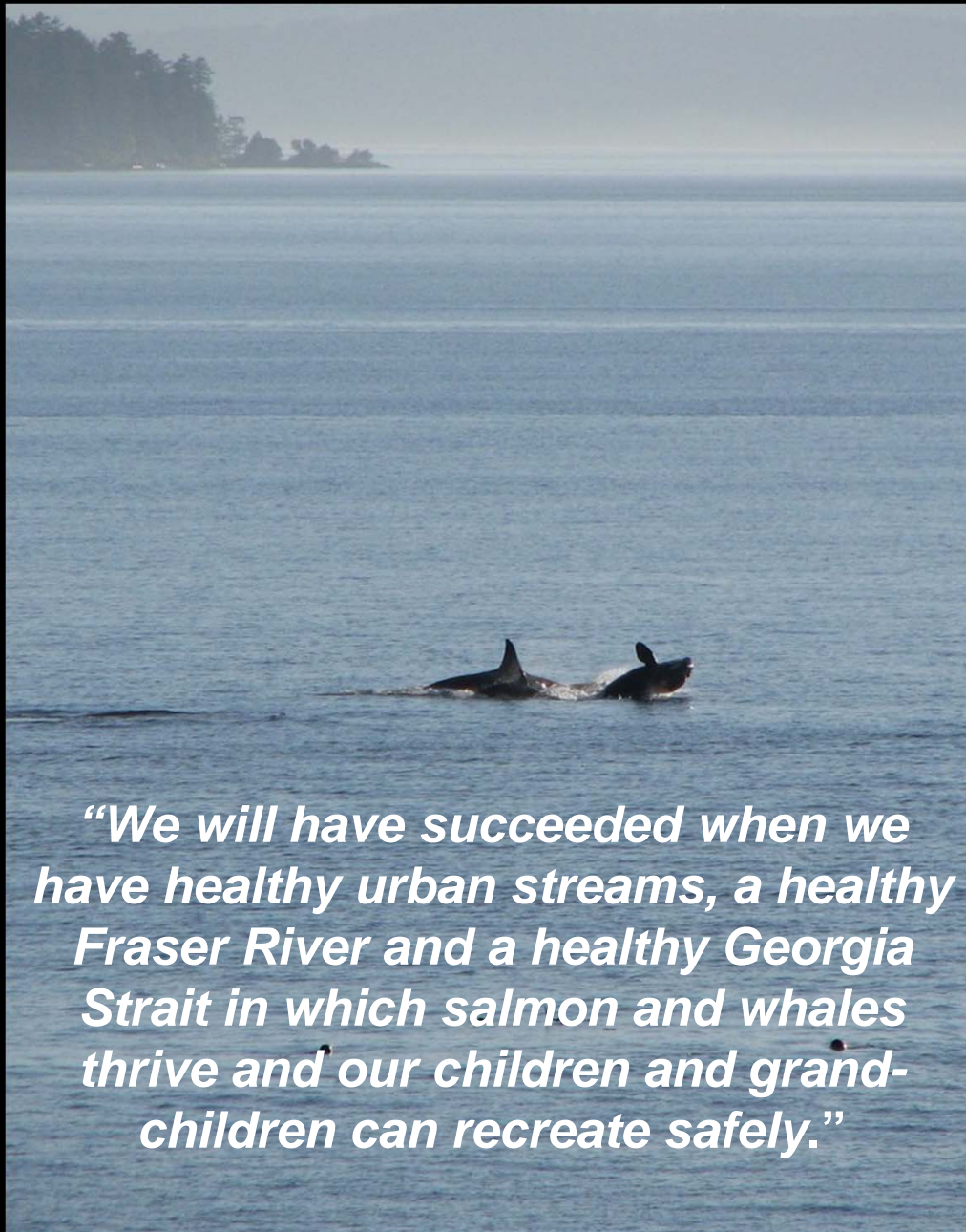
The Metro Vancouver Reference Panel.....

- reports directly to regional politicians to contribute:
 - *expert knowledge and relevant experience in liquid waste/resource and rainwater management*
 - *a blend of technical, legal, scientific, academic, business, industry and community perspectives*
- provides independent review and recommendations





**The Reference Panel emphasized:
“Value liquid discharges and rainwater
as resources, and focus on the GOAL”**

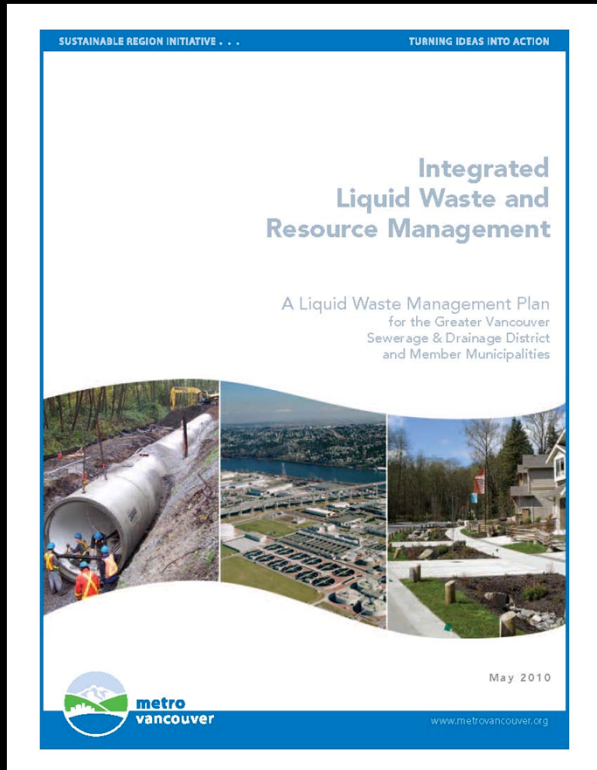




“We will have succeeded when we have healthy urban streams, a healthy Fraser River and a healthy Georgia Strait in which salmon and whales thrive and our children and grandchildren can recreate safely.”

The Reference Panel's 19 recommendations constitute a policy framework for achieving Metro Vancouver's Sustainable Region Vision

- Natural Environment (3) - *move from protect to improve*
- Built Environment (4) - *move beyond pilot projects* 
- Sewage Treatment (5) - *move from waste to resource*
- Financing (4) – *move to a total system approach*
- Implementation (3) - *move from commitment to action* 



Strategies and actions in the *Integrated Plan* provide a starting point for:

1. embracing a “regional team” approach;
2. implementing “integrated solutions”; and
3. making the *Sustainability Vision* real.

Why a Course Correction:

“The elephant in the room” is unfunded municipal liabilities resulting from....



Unintended outcomes of ISMPs
(Integrated Stormwater Management Plans)

Course Correction - Policy Recommendations

For Getting Green Infrastructure Built Right

What will our neighbourhoods look like?
We do have choices!

14 units per acre can be
'HARD' development
= HIGH impact on creeks

OR

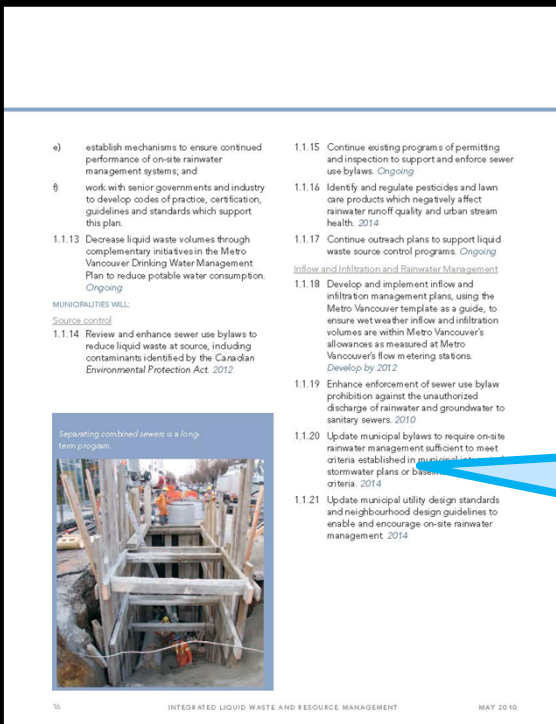
14 units per acre can be
'GREEN' development
= LOW impact on creeks



5. Re-focus **ISMPs** on watershed targets and outcomes
6. Mandate a **'new SILG'** to lead a regional team approach
7. Implement a **consistent & integrated** approach region-wide

'Table 2' in Beyond the Guidebook 2010 provides a framework for the course correction

Develop outcome-oriented watershed plans that protect and/or improve stream health



Action #1.1.20:

“Municipalities will update municipal bylaws to require **on-site rainwater management** sufficient to meet criteria established in municipal integrated stormwater plans or baseline region-wide criteria.”

Set watershed-specific performance targets that protect and/or improve stream health, and implement targets at the development scale

(from Table 2 in Beyond the Guidebook 2010)

- What target will achieve watershed health objective?
- What needs to be done to make target achievable?
- Do 'green' infrastructure solutions meet the test of affordability and multiple objectives?

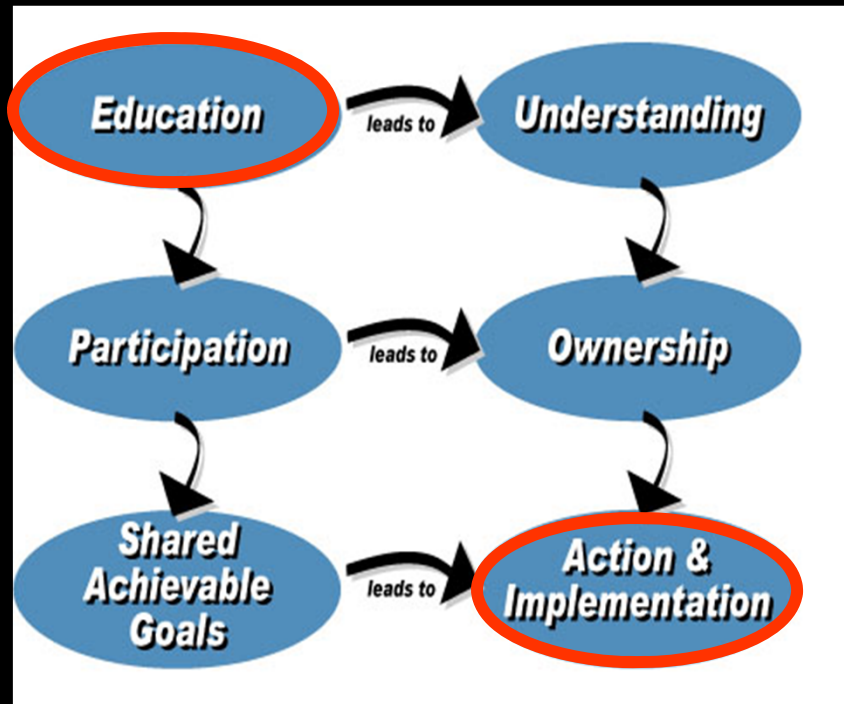
Implementation: *Move from Commitment to Action*

When the Minister of Environment approves the Integrated Plan, it becomes a regulation.

Then, an over-arching **Integrated Utility Management Advisory Committee (IUMAC)** will be established.

IUMAC will steward the Integrated Plan, ensure ongoing action and implementation occurs and stays true to the vision

This is what needs to happen to achieve integration that leads to action



Critical Success Factors:

- *Commitment* to take action & deliver
- *Champions* to provide energy & drive
- *Accountability* to deliver at all levels
- *Resources* to get the job done

Inform, Educate & Inspire

Source:
Stormwater Planning: A Guidebook for British Columbia, 2002

Metro Vancouver's *Integrated Liquid Waste & Resource Management Plan* is a success story because...

“The Metro Vancouver Reference Panel process has demonstrated what can be accomplished when local government staff and community representatives respect each other, share a vision for the region, and are motivated by the common good. It is a powerful example of collaboration in action.”

Johnny Carline
Chief Administrative Officer
Metro Vancouver
June 2010

